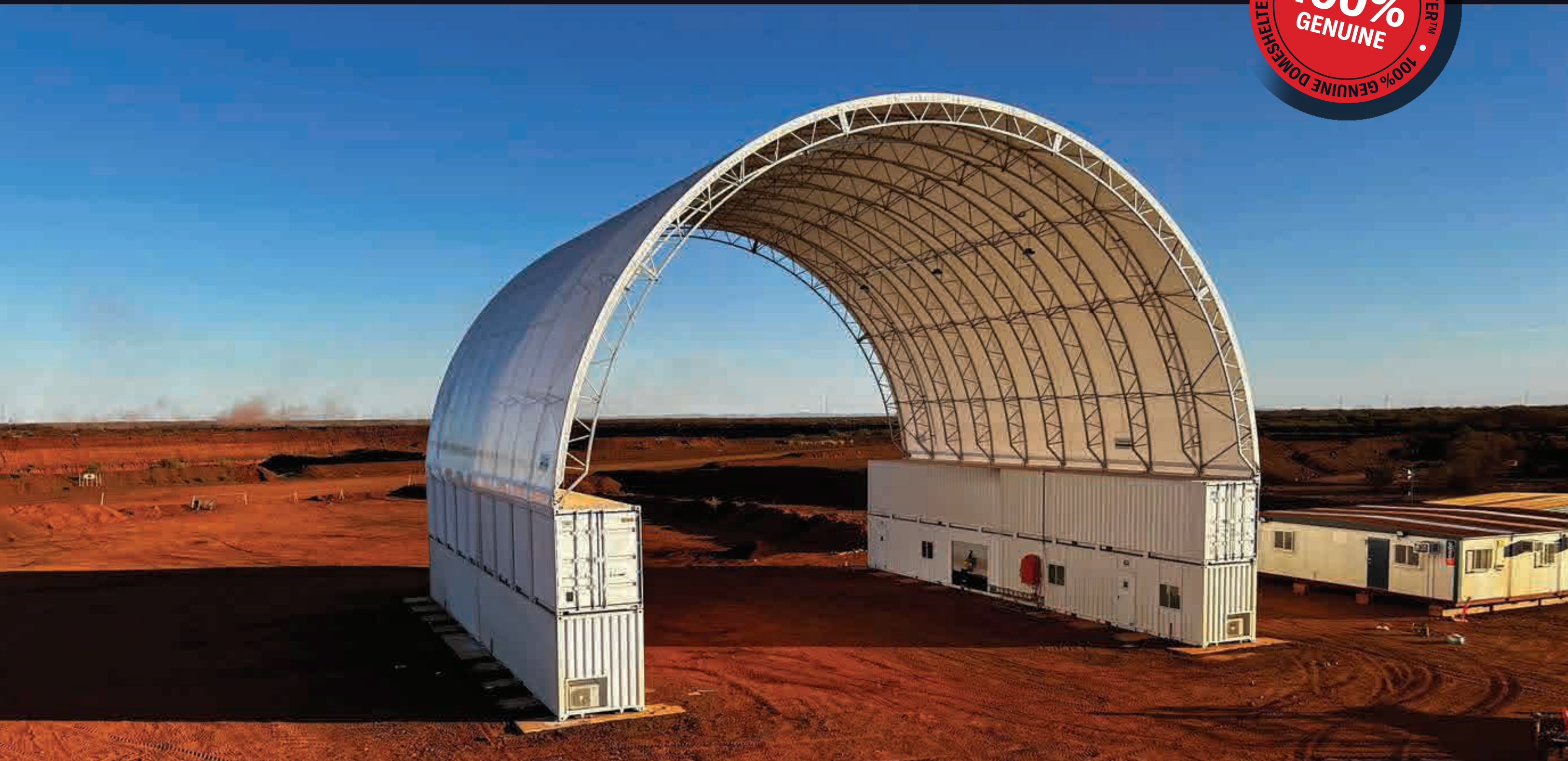




CAPABILITY STATEMENT





ABOUT DOMESHELTER AUSTRALIA

DomeShelter Australia is a privately owned company, employing over 80 staff across multiple manufacturing facilities and offices, across Australia and abroad. Since being founded by brothers Geoff and Trevor Fawkes over 30 years ago, DomeShelter Australia has become a respected and leading supplier of superior, Fit-for-purpose Fabric Shelters with over 8,000 produced – and counting!

Our clients span a wide range of industries in over 50 countries across the globe.

We remain a proudly Australian made, owned and operated company.





OUR PEOPLE



Trevor Fawkes
Director



Geoff Fawkes
Director



Roy Fawkes
Director of Global Sales

DomeShelter Australia operates with a dedicated team of over **80 professionals** across our key locations:

- **Perth**
- **Northam**
- **Melbourne**

Our in-house Manufacturing, Engineering, and Design teams work collaboratively to deliver innovative and Fit-For-Purpose Shelter Solutions to our clients worldwide.



We Live by Our Values

Build Trust | Be Agile | Be A Team

WE PROTECT PEOPLE AND ASSETS

DomeShelter Australia's mission is to protect people and assets from the harmful effects of the elements - quickly, simply and effectively.

Driven by Innovation

We strive to continually innovate and exceed customer expectations with high quality, durable and Fit-For-Purpose Shelter Solutions exported to the world.



/ MID WEST, WESTERN AUSTRALIA



/ ARGENTINA, SOUTH AMERICA



/ EAST ARNHAM, NORTHERN TERRITORY



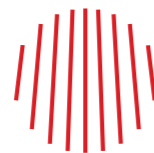
/ MID WEST, WESTERN AUSTRALIA

AS TOUGH AS THE ELEMENTS

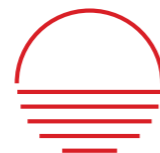
We supply superior quality, cyclone-rated DomeShelter™ Structures that are designed to withstand and protect in the harshest conditions.



EXTREME WIND



HEAVY RAIN



EXTREME HEAT



- ✔ Unique & proven design methodology – DomeShelter Logic®
- ✔ Engineered to Australian Standards AS1170.2.2021
- ✔ Welding compliance with AS1554 Category SP
- ✔ Internationally Accredited: ISO 9001, AS4801 and OHSAS18001

Internationally Accredited

ISO 9001, ISO 45001 and OHSAS18001 accreditations ensure that our manufacturing and logistics processes are of the highest standard, and that only the best possible materials, components and systems are used.



PROVEN JOURNEY

TRUSTED. AGILE. RESPONSIVE. END TO END.

STAGE 01

Needs Analysis & Facility Design

- 01 Project analysis & strategy
- 02 Pre-feasibility plan
- 03 Conceptual design presentation
- 04 Internal pre-engineering discussion
- 05 Initial scope & indicative investment presentation



STAGE 02

Detailed Design & Engineering

- 06 Client scope, design & budget approval (purchase order)
- 07 General assembly (GA) drawings
- 08 Engineering & compliance documentation
- 09 Final investment approval & deposit received
- 10 Project documentation control & handover



STAGE 03

Manufacturing & Delivery

- 11 Procurement
- 12 Manufacturing & quality control
- 13 Packaging & delivery
- 14 Installation training instructions
- 15 Ongoing maintenance programme



INDUSTRIES WE SERVICE



DomeShelter™ Fabric Structures are delivered to the remotest sites worldwide for easy installation by your on site team.

Industries we service:

- ✓ Mining
- ✓ Defence & Aerospace
- ✓ Construction & Industrial
- ✓ Waste Management & Environmental
- ✓ Agriculture
- ✓ Transport & Logistics



50 
COUNTRIES
EXPORTED TO.

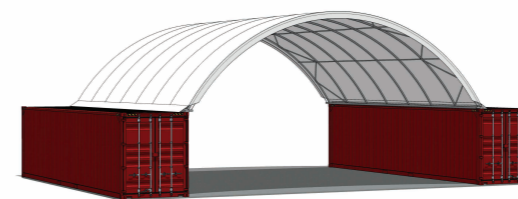
ENGINEERED TO PROTECT



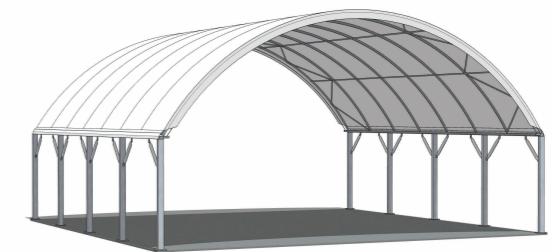
THE PRODUCT

DomeShelter Australia has a commitment to quality and innovation that has ensured the DomeShelter™ Product is consistently rated as the best in the market.

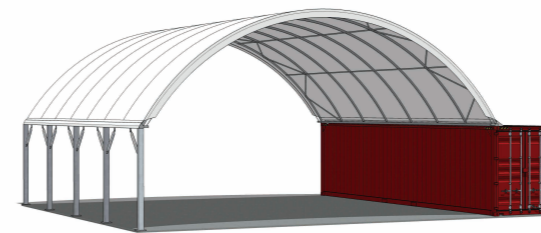
We have a range of readily available standard products to purchase online at store.domeshelter.com.au. For clients with unique needs, we engineer customised solutions to suit the most demanding requirements.



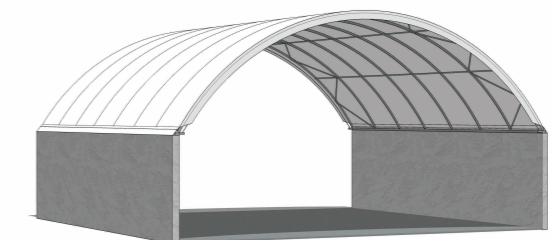
CONTAINER MOUNTED



POST MOUNTED



COMBINATION MOUNTED



CONCRETE WALL MOUNTED

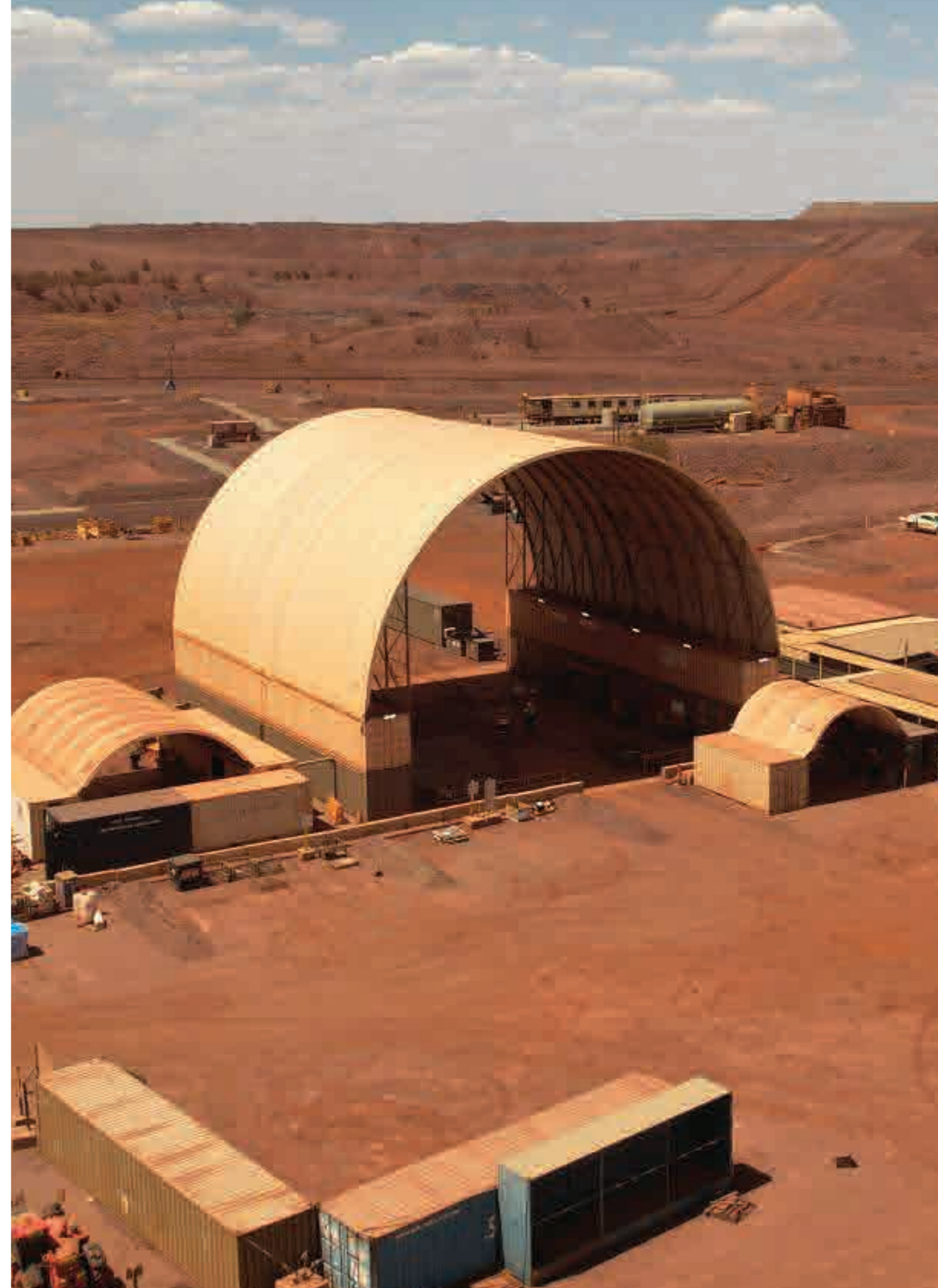
Available add-ons

- ✔ LED Floodlight & High Bay Lighting
- ✔ Guttering & Water Management
- ✔ Ground Anchoring Solutions
- ✔ Portable Flooring Systems
- ✔ Signage & Branding
- ✔ Endwalls & Doors
- ✔ Sea Containers

WHY CHOOSE A FABRIC-COVERED STRUCTURE?

With impressive advances in fabric technology and frame design, Fabric Shelters are now widely used where conventional steel buildings were once standard.

- ✔ Engineered to withstand tropical cyclone winds
- ✔ 10 year warranty
- ✔ Faster project delivery
- ✔ Fast and easy to install
- ✔ Cost-effective and versatile



TESTIMONIALS



“ Good quality product. Good customer service. Knowledgeable team. We purchased x15 dome shelters in past 12 months and Dome Shelter Australia have never let us down. The team is a pleasure to deal with and makes the whole process easy. Well done”

- **Garreth Twomey**, Monadelphous



“Great team, always responsive and very professional:

- Delivery was faster than expected (even with covid. Well done!)
- No hidden cost. Good quality product.
- Engineering drawings and documentation was very clear and delivered in time.

I strongly recommend them for all your Dome Shelter needs.”

- **Claire Vermet**, FMG



“Recently needed some additional shelter on site for trucks and equipment to protect them from the weather and came across DomeShelter’s products & were very impressed.

All communication was excellent, good old fashioned service & advice, right through to completion of the installation.

The shelter looks great and is the perfect size for our machines. Super happy with the experience, would highly recommend DomeShelter Australia. Keep it Up.”

- **Derek Mason**, Transplus

Our valued clients



CONTACT

T: 1300 193 188

E: sales@domeshelter.com.au

www.domeshelter.com.au

HEAD OFFICE

61 Old York Road, Northam, 6401
Australia

PERTH OFFICE

6/182 St Georges Tce, Perth, 6000
Australia

VICTORIA OFFICE

140 Castro Way, Derrimut, 3026
Australia

LATIN AMERICA OFFICE

Av. Sgto Cayetano Beliera 3025 (RN8) Pilar
Buenos Aires 1629 Argentina

MIDDLE EAST & AFRICA OFFICE

Level 1, Silver Tower, Jumeirah Lake Towers,
Dubai United Arab Emirates

 **DOMESHELTER**[®]
AUSTRALIA